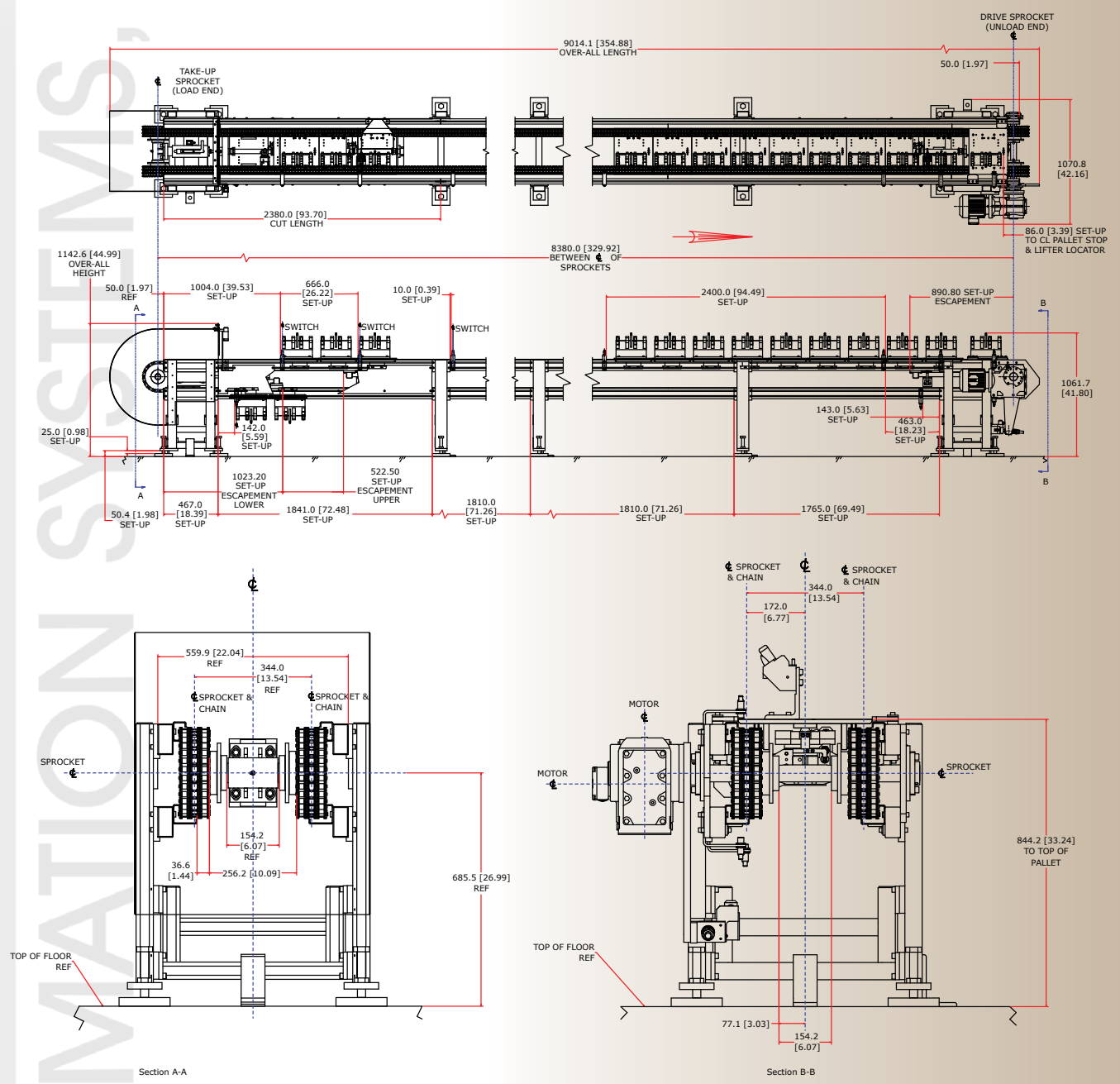
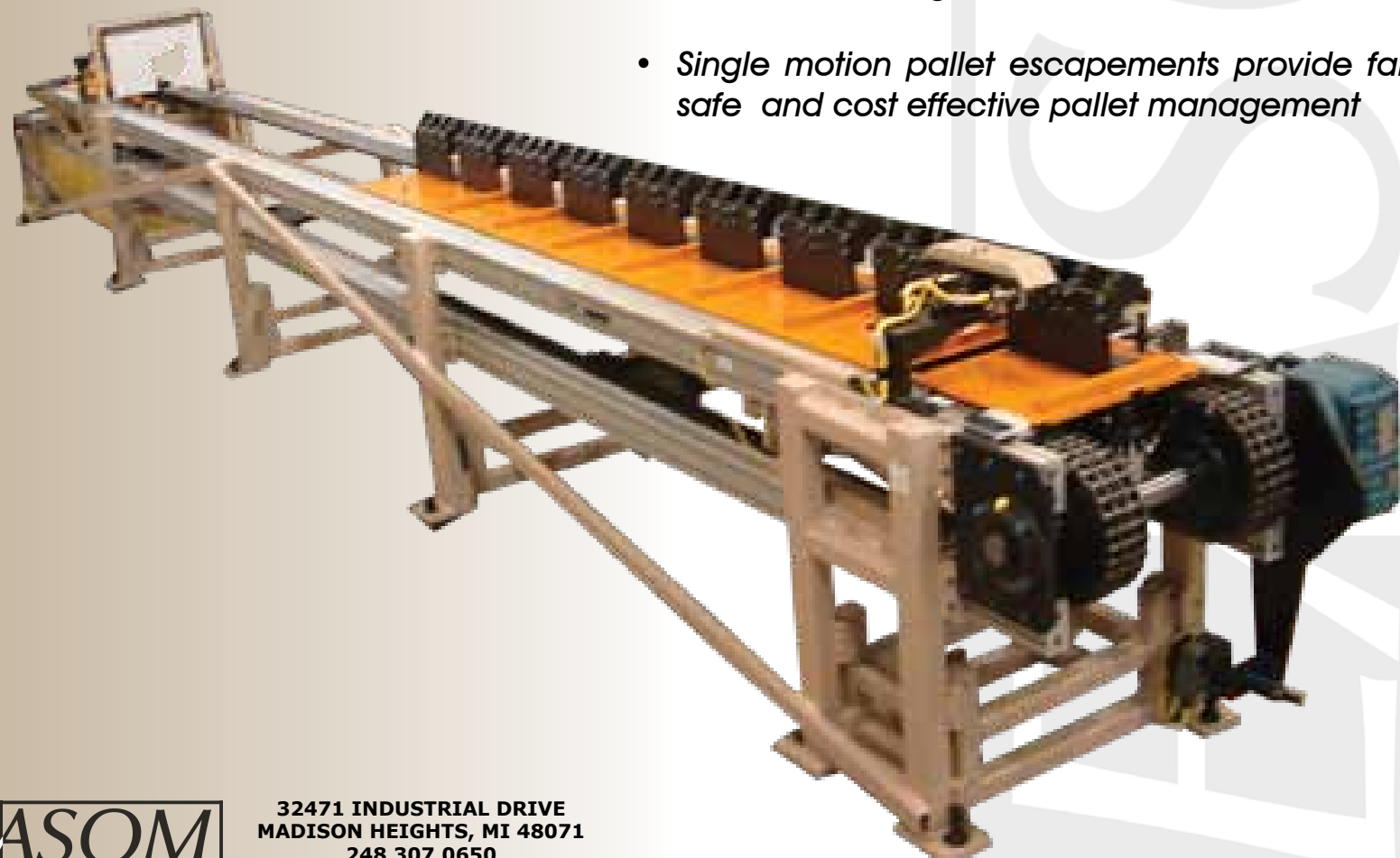


ACCUMULATING CONVEYOR



- Pallet transfer via frictionless mechanical engagement allows for faultless transfer no matter the environment or atmospheric conditions
- “Zero chain contact” feature on unload positions improves positional accuracy and provides a truly static condition
- Uniform tension maintained on conveyor chain with center guided chain take-up
- Spring loaded take-up reduces pallet chugging and softens pallet transfer
- Adjustable mechanical torque limiting device protects mechanism during crash or jam events
- Triple stand chain is the heaviest in the market, ensures long smooth operation
- Application specific engineering cost reduced by modular design
- Single motion pallet escapements provide fail safe and cost effective pallet management



ACCUMULATING CONVEYOR