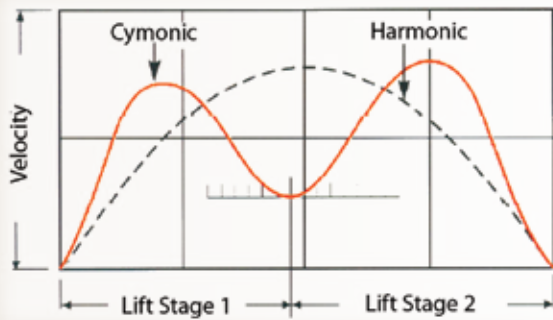


Transfer Drive



Lift Drive

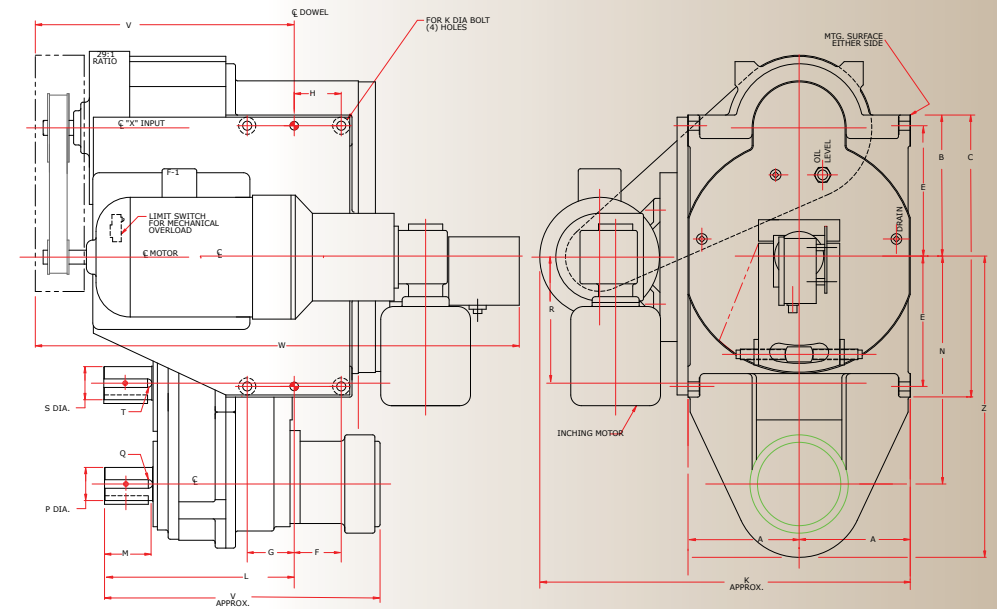
The Cymonic Electromechanical Transfer Drive generates soft start / stop transfer motion while providing exceptionally smooth transitions from maximum acceleration to maximum deceleration

- Transfer System is protected by a “Single Position Torque Overload”
- Torque setting is externally accessible for field calibration.
- Index length is predetermined by the Cymonic Drive step-up gear ratio.
- Index length may be shifted for positioning through an external adjustment arm
- Inherent characteristics of the Cymonic Drive provide repeatable positioning without stops or locating pins
- Torque overload capabilities of the Cymonic Transfer Drive range from 2428.6 N-m - 90387.8 N-m (25000 to 800000 in-lb)

The Cymonic Electromechanical Lift Drive provides soft pick-up and deposit velocities for any vertical travel. This allows for faster cycle times without causing “part bounce”

- Lift system is protected by a “Single Position Torque Overload”
- Torque setting is externally accessible for field calibration
- “Adjustable” Soft Pick-Up point may be repositioned anywhere within the total lift distance through an external adjustment arm
- Pick-up velocity may be engineered from an acceptable minimum to zero
- The torque overload capabilities of the Cymonic Lift Drive range from 2428.6 N-m to 45193.9 N-m (25000 to 400000 in-lb)

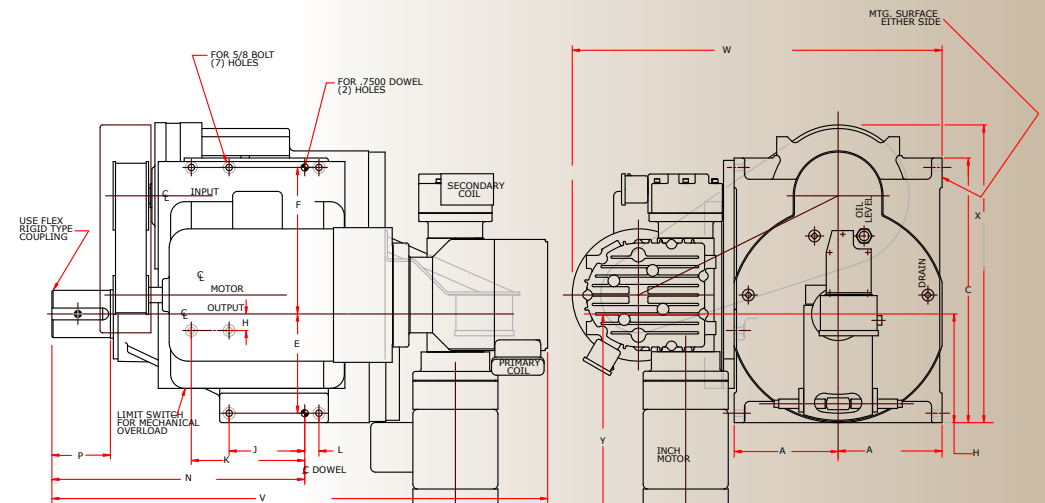
TRANSFER DRIVE



All dimensions are in inches

Cymonic Drive Size	Main Motor H.P.	Inch Motor H.P.	Transfer Drive Dimensions (A-Z)																4 Turn Output		6 to 12 Turn Output									
			A	B	C	D	E	F	G	H	J	K	L	M	U	V	W	X	Y	Z	R	S	T-KEYS	N	P	Q-KEYS				
25	2	3/4	6.000	7.75	15.50	7.50	7.2500	3.000	2.500	3.50	.5000	3/8	12.00	2.50	20.00	13.00	44.25	25.25	16.62	27.62	6.7857	1.750	3/8sq. X 2-3/8	12.0375	1.500	3/8sq. X 2-3/8				
	3		7.000	9.00	18.00	8.75	7.3750	3.375	3.125	4.00	.6250	1/2	13.75	3.25	21.50	16.88	44.68	27.44	19.62	32.50	7.9167	2.250	1/2sq. X 3	14.4792	2.000	1/2sq. X 3				
	5	1	9.000	11.25	22.50	9.62	10.5000	3.375	3.750	4.12	.7500	5/8	15.75	3.82	23.62	20.50	44.82	31.25		48.50	33.44		24.50	41.12	10.0000	3.000	3/4sq. X 3-3/8	17.5000	2.625	5/8sq. X 3-1/2
100	7-1/2	1	11.000	13.75	27.50	11.50	12.7500	4.250	4.000	5.25	.7500	3/4	17.88	4.25	26.25	25.75	50.32	38.03		50.88	39.12		28.75	48.75	12.5000	3.625	7/8sq. X 3-3/4	21.2500	3.250	3/4sq. X 3-3/4
	10	1-1/2	13.000	16.50	33.00	14.75	15.2500	5.500	5.500	6.75	1.0000	1	22.25	5.62	32.44		30.25	56.62	43.50				35.25	58.75	15.0000	4.250	1 sq. X 5	26.6667	3.875	1 sq. X 5
	15	2	13.000	16.50	33.00	14.75	15.2500	5.500	5.500	6.75	1.0000	1	22.25	5.62	32.44		30.25	56.62	43.50				35.25	58.75	15.0000	4.250	1 sq. X 5	26.6667	3.875	1 sq. X 5

LIFT DRIVE



All dimensions are in inches

Cymonic Drive Size	Main Motor H.P.	Inch Motor H.P.	Lift Drive Dimensions (A-Y)																						
			A	B	C	D	E	F	G	H	J	K	L	M	N	P	Q	R	S	T-KEY	U	V	W	X	Y
25	2	3/4	6.000	6.50	15.00	8.00	6.0000	8.0000	1.000	—	6.000	—	1.000	1.50	13.25	3.50	3/8	5	.5000	6/8 sq. X 2-7/8	2.500	46.50	25.50	17.50	18.50
	3		7.000	7.50	17.50	9.50	6.8750	9.3750	1.250	—	7.000	—	1.250	1.88	17.88	3.75	1/2	5	.6250	3/4 sq. X 3-1/2	3.000	48.32	27.44	20.12	18.75
	5	1	9.000	9.50	22.50	13.25	8.8750	12.3750	—	1.250	7.125	10.625	1.375	2.00	21.25	4.38	1/2	7	.6250	7/8 sq. X 3-1/2	3.750	52.75	33.78	26.12	16.25
100	7-1/2	1	11.000	11.50	28.00	15.50	10.5000	15.5000	—	1.750	8.000	12.000	1.500	2.50	26.75	6.00	5/8	7	.7500	1-1/4 sq. X 5-1/2	5.000	56.00	39.12	31.50	17.62
	10	1-1/2	13.000	13.75	33.25	23.12	12.5000	18.2500	—	2.000	10.250	18.500	2.000	3.32	36.25	7.25	1	7	1.0000	1-1/2 sq. X 6-1/2	6.000	62.00	48.00	37.25	28.00
	15	2	13.000	13.75	33.25	23.12	12.5000	18.2500	—	2.000	10.250	18.500	2.000	3.32	36.25	7.25	1	7	1.0000	1-1/2 sq. X 6-1/2	6.000	62.00	48.00	37.25	28.00