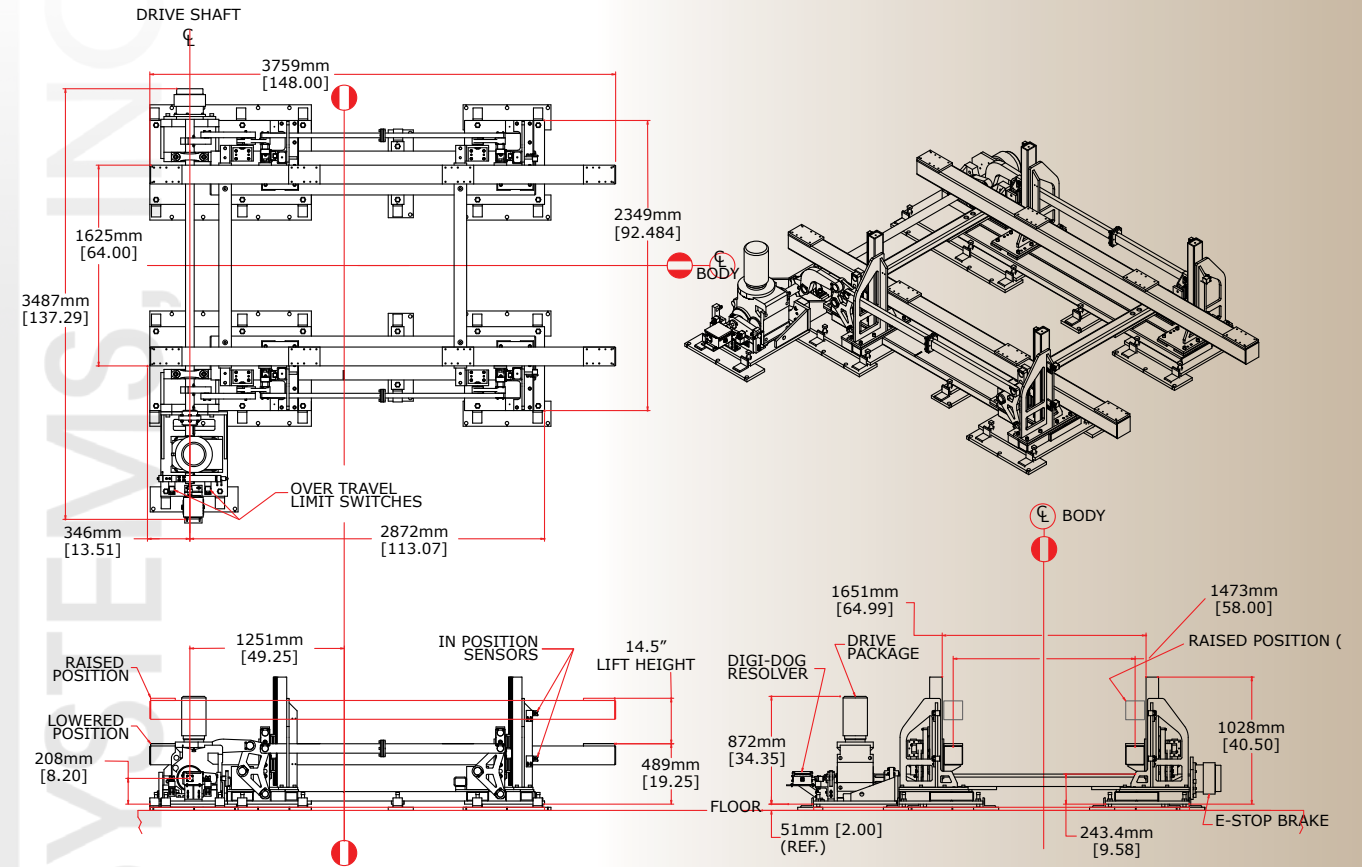




Integrated with fast pull bar transfer

- Precision positioning of body
- Electric drive
- Lift options are available in standard: 368 mm (14½ in), 457 mm (18 in), & 610 mm (24 in) (Custom application available)
- Harmonic Motion Profile repeatable within ± 0.1 mm (± 0.004 in)
- Drive reducer is equipped with over travel protection
- All crankshaft and linkage bearings are lubed-for-life
- Crankshaft position is provided by a Digi-Dog™ Digital Programmable Rotary Limit Switch
- In Position confirmation sensors for tooling beams
- Safety lock out
- Controls solutions available



Specifications

Solutions engineered to customer's requirements

Specifications		<i>Solutions engineered to customer's requirements</i>
368 mm (14 ½ in) Lifter		
Max. Tooling & Part Weight (No Air Counter Balance)	900 kg (2000 lb.) Full stroke plus 450 kg (1000 lb.) final 51 mm (2 in) of full stroke	
Lift Time	2.5 Sec.	
457 mm (18 in) Lifter		
Max. Tooling & Part Weight (No Air Counter Balance)	900 kg (2000 lb.) Full stroke plus 450 kg (1000 lb.) final 51 mm (2 in) of full stroke	
Lift Time	2.5 Sec.	
610 mm (24 in) Lifter		
Max. Tooling & Part Weight (No Air Counter Balance)	1800 kg (4000 lb.) Full stroke	
Lift Time	3.25 Sec.	
External Spring Engaged Safety Brake (Optional)		