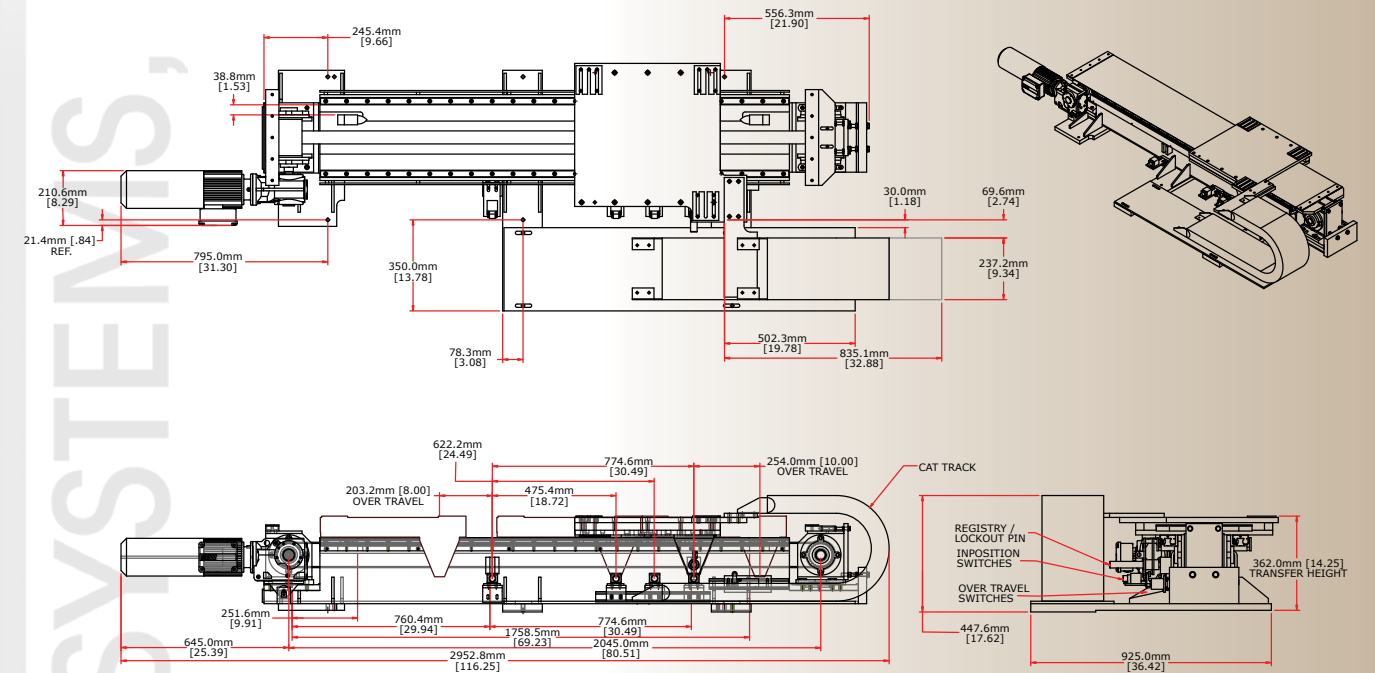


- Reliable precision linear belt technology. Easy to replace, and requires no lubrication
- Uses 7th axis drive from a robot manufacturer or can use variable frequency or servo drives
- Can be customized for various lengths, widths and speeds
- Able to be inverted for overhead applications
- Programmable for multiple positions
- Wide variety of speeds and weights
- Drives are easy to access and service
- Trapped rollers with hardened way or linear bearings ensure precision, accuracy, and long life
- Double shuttle cart option facilitates a continuous stretched steel rail/belt guard when required
- Controls solutions available



Specifications	Solutions engineered to customer's requirements
Transferred Maximum Weight	90 kg (200 lb.) to 450 kg (1000 lb.)
Overall Length	2 meters (6 ft.) to 10 meters (33 ft.)
Maximum Velocity	1.0 meters/sec. to 3.5 meters/sec.
Positional Accuracy	± 0.5 mm (0.02 in) (Higher accuracies available upon request)
Drive	Shaft mounted gear motor 7 series with brake motor or servo